



# August 2025

## Newsletter

### NEW ENERGY EFFICIENCY REBATES

OCEC is pleased to announce **new rebate opportunities** for residential energy efficiency upgrades through the Bonneville Power Administration (BPA) programs.

#### New Rebates Include:

- Attic, floor, and wall insulation
- Energy-efficient windows and patio doors

These new programs are designed to help members **reduce energy use** and **lower utility bills** – all while improving home comfort.

#### Ongoing Rebates:

- Ductless and ducted heat pumps
- Heat pump water heaters

*(For replacements of existing electric systems with qualified units)*

To view full program requirements and start your application, visit our website:

[www.ocec.coop/rebates-assistance/](http://www.ocec.coop/rebates-assistance/)

Questions? Email us at [info@ocec.coop](mailto:info@ocec.coop) – we're here to help!



---

**Board of Directors:** **Alaina Burtenshaw** [aburtenshaw@ocec.coop](mailto:aburtenshaw@ocec.coop) | **Alan Watson** [awatson@ocec.coop](mailto:awatson@ocec.coop)  
**Dale Sekijima** [dsekijima@ocec.coop](mailto:dsekijima@ocec.coop) | **John Rogers** [jrogers@ocec.coop](mailto:jrogers@ocec.coop) |  
**Linda Schoemaker** [lschoemaker@ocec.coop](mailto:lschoemaker@ocec.coop) | **Michael Murray** [mmurray@ocec.coop](mailto:mmurray@ocec.coop) |  
**Rick Johnson** [rjohnson@ocec.coop](mailto:rjohnson@ocec.coop) |

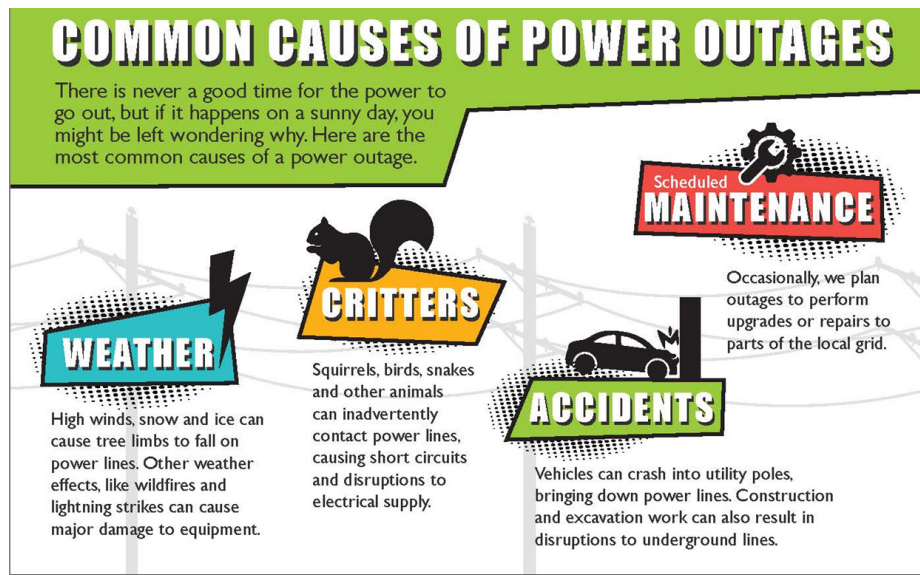
# ENERGY EFFICIENCY TIP OF THE MONTH

During summer months, run large appliances that emit heat such as clothes dryers and dishwashers during the evening when the outdoor temperature is lower. Running heat-emitting appliances in the evening will reduce indoor heat gain during the day when outdoor temperatures are highest and ultimately keep your air conditioner from working harder than necessary.

---

## OUTAGES AND RESTORATION

There's never a good time for a power outage, but you might be surprised to learn disruptions can occur from a variety of causes beyond the weather. Vehicle accidents, excavation work and maintenance, small critters and scheduled repairs are also common causes of power outages. Whatever the reason, OCEC crews are always ready to respond and get your power back on as quickly and safely as possible.



We track and record outages on an annual basis. Here are some statistics from 2024:

- 42 outages were caused by weather
- 9 outages were caused by critters (birds, squirrels, etc.)
- 28 outages were for maintenance; either to upgrade or make repairs before an equipment failure.

---

**Our mailing address is:** PO Box 69, Winthrop, WA 98862  
**Contact us:** Toll Free: (888) 710-2228 | Local: (509) 996-2228  
Email: [info@ocec.coop](mailto:info@ocec.coop) | Web: [www.ocec.coop](http://www.ocec.coop)